

LATEST STATUS  
29/10/2018

2018  
10

Final Response	
Transaction Status	Paid
Affiliation Number	531230
Ref No.	C1801214920854
Transaction Payment ID	700201830249760879
Transaction ID	201830249791951
Transaction Amount	RS 60000.0

10/10/18

[BACK TO LOGIN PAGE](#)

100000  
Report

**BASIC DETAILS**

20854--D INTERNATIONAL SCHOOL VPO KAKODA HR  
Dated : 28/07/2018

SCHOOL NAME	D R INTERNATIONAL SCHOOL VPO KAKODA HR	SCHOOL CODE	
ADDRESS	D R INTERNATIONAL SCHOOL, VPO KAKODA GANNAUR, PANIPAT ROAD	AFFILIATION CODE	
PRINCIPAL	MRS SUMAN SHERAWAT	PRINCIPAL'S CONTACT NUMBER	
PRINCIPAL'S EMAIL ID	hod.medrcet@gmail.com	PRINCIPAL'S RETIREMENT DATE	
SCHOOL'S CONTACT NUMBER	0180-9728577626	SCHOOL'S EMAIL ID	
SCHOOL'S WEBSITE		SCHOOL'S FAX NUMBER	
LANDMARK NEAR SCHOOL	KAKODA	YEAR OF ESTABLISHMENT	
AFFILIATION VALIDITY	2015 TO 2018	AFFILIATION STATUS	
NAME OF THE TRUST/SOCIETY/COMPANY REGISTERED WITH	shri DR memorial education society	REGISTRATION DATE	
SOCIETY REGISTRATION NUMBER	40162	REGISTRATION VALIDITY	
NO. ISSUING AUTHORITY	cbse	NOC ISSUING DATE	
NO OBJECTION CERTIFICATE	VIEW (PdfHandler.aspx? FileName=G:\cbse\2018\oasisdemo\noc\20854.PDF)	NON PROPRIETY CHARACTER AFFIDAVIT/NON PROFIT COMPANY AFFIDAVIT	FileNar

7/28/2018

CBSE | FORM

**FACULTY DETAILS**

20854--D R INTERNATIONAL SCHOOL VPO KAKODA HR  
Dated : 28/07/2018

TOTAL NUMBER OF TEACHERS (ALL CLASSES)	33	NUMBER OF PGTS	6
NUMBER OF TGTS	8	NUMBER OF PRTS	10
NUMBER OF PETS	4	OTHER NON-TEACHING STAFF	5
NUMBER OF MANDATORY TRAINING QUALIFIED TEACHERS	4	NUMBER OF TRAININGS ATTENDED BY FACULTY SINCE LAST YEAR	2

**STUDENT DETAILS**

20854--D INTERNATIONAL SCHOOL VPO KAKODA HR

Dated : 28/07/2018

CLASS	TOTAL NUMBER OF SECTIONS	TOTAL NUMBER OF INTAKE	TOTAL NUMBER OF STUDENTS
1	2	40	38
2	1	40	29
3	2	40	35
4	2	50	42
5	2	50	42
6	1	50	24
7	1	40	30
8	1	40	30
9	1	40	18
10	1	40	19
11	00	0	0
12	0	0	0

**ACADEMIC DETAILS**

**20854--D R INTERNATIONAL SCHOOL VPO KAKODA HR**  
**Dated : 28/07/2018**

<b>SUBJECTS OFFERED FOR CLASS 10</b>	<b>SUBJECTS OFFERED FOR CLASS 12</b>
002--HINDI COURSE-A 041--MATHEMATICS 086--SCIENCE 087--SOCIAL SCIENCE 101--ENGLISH COMM. 402--INFO TECHNOLOGY	

**INFRASTRUCTURE DETAILS**

20854--D RINTERNATIONAL SCHOOL VPO KAKODAH R

Dated : 28/07/2018

TOTAL NUMBER OF SITES OF SCHOOL	4	TOTAL NUMBER OF BUILDING BLOCKS	
TOTAL AREA OF SCHOOL IN SQUARE METRES	19360	TOTAL NUMBER OF PLAYGROUNDS	
TOTAL AREA OF PLAYGROUND IN SQUARE METRES	14279	TOTAL NUMBER OF ROOMS	
TOTAL NUMBER OF SMALL-SIZED ROOMS	10	TOTAL NUMBER OF MEDIUM-SIZED ROOMS	
TOTAL NUMBER OF LARGE-SIZED ROOMS	10	TOTAL NUMBER OF MALE REST ROOM	
TOTAL NUMBER OF FEMALE REST ROOM	1	NUMBER OF GIRLS' TOILET	
NUMBER OF BOYS' TOILET	2	NUMBER OF TOILETS FOR DIFFERENTLY ABLED PERSONS	
NUMBER OF WASHROOMS FOR FEMALE STAFF	1	NUMBER OF WASHROOMS FOR MALE STAFF	
TOTAL NUMBER OF LIBRARIES	1	NUMBER OF LABORATORIES	
TOTAL NUMBER OF STUDENT	1	TOTAL NUMBER OF	

CANTEENS		STAFF CANTEENS	
NUMBER OF WATER PURIFIERS/ROS	2	NUMBER OF AUDITORIUMS	
NUMBER OF LIFT/S/ELEVATORS	0	NUMBER OF DIGITAL CLASSROOMS	
DOES THE SCHOOL HAS HOSTEL FACILITY	NO	DOES THE SCHOOL HAS GUARDS EMPLOYED FOR SAFETY	
DOES THE SCHOOL HAS FIRE EXTINGUISHERS	YES	DOES THE SCHOOL HAS SPRINKLERS	
DOES THE SCHOOL HAS CCTV CAMERAS INSTALLED?	YES	IS THE SCHOOL EXAMINATION CENTER OF CBSE?	
TOTAL NUMBER OF COMPUTERS IN ALL COMPUTER LAB	30	DOES THE SCHOOL HAS WEB SERVERS	
DOES THE SCHOOL HAS A BOUNDARY WALL?	YES	IS YOUR SCHOOL BARRIER FREE/ HAS RAMPS?	
DOES THE SCHOOL HAS CLINIC FACILITY?	YES	DOES THE SCHOOL HAS A STRONG ROOM?	
DOES THE SCHOOL HAS A GYMNASIUM?	YES	IS YOUR SCHOOL WI-FI ENABLED?	
PROVISION OF WEB BASED	YES	DOES THE SCHOOL HAS	

**LOCATION DETAILS**

20854-D R INTERNATIONAL SCHOOL VPO KAKODAH R

Dated : 28/07/2018

NEAREST NATIONALISED BANK	hbfc	DISTANCE OF BANK FROM SCHOOL IN KM	2
NEAREST BUS STATION	kakoda	DISTANCE OF BUS TERMINAL FROM SCHOOL IN KM	1
NEAREST RAILWAY STATION	israna	DISTANCE OF RAILWAY STATION FROM SCHOOL IN KM	14
NEAREST AIRPORT	karnal	DISTANCE OF AIRPORT FROM SCHOOL IN KM	70
NEAREST HOSPITAL	khanpur	DISTANCE OF HOSPITAL FROM SCHOOL IN KM	8
NEAREST POLICE STATION	israna	DISTANCE OF POLICE STATION FROM SCHOOL IN KM	10
NEAREST METRO STATION		DISTANCE OF METRO FROM SCHOOL IN KM	



**OTHER VITAL INFORMATION**

20854--D R INTERNATIONAL SCHOOL VPO KAKODAH R  
Dated : 28/07/2018

<b>10th BOARD PASS PERCENTAGE (2014/2015/2016)</b>	<p>100/95/99</p>	<b>12th BOARD PASS PERCENTAGE (2014/2015/2016)</b>
<b>NAME OF WELLNESS/ACTIVITY TEACHER</b>	<p>YES</p>	<b>NAME OF GRIEVANCE/COMPLAINT REDRESSAL OFFICER</b>
<b>CONTACT NUMBER OF GRIEVANCE/COMPLAINT REDRESSAL OFFICER</b>	<p>9315322227</p>	<b>EMAIL ID OF GRIEVANCE/COMPLAINT REDRESSAL OFFICER</b>
<b>NAME OF HEAD OF SEXUAL HARASSMENT COMMITTEE</b>	<p>mona gupta</p>	<b>CONTACT NUMBER OF HEAD OF SEXUAL HARASSMENT COMMITTEE</b>
<b>EMAIL ID OF HEAD OF SEXUAL HARASSMENT COMMITTEE</b>	<p>schooldri@gmail.com</p>	<b>NAME OF CONTACT PERSON IN CASE OF EMERGENCY</b>
<b>CONTACT NUMBER OF CONTACT PERSON IN CASE OF EMERGENCY</b>	<p>9992870342</p>	<b>EMAIL ID OF CONTACT PERSON IN CASE OF EMERGENCY</b>
<b>TOTAL NUMBER OF DOCTORS IN SCHOOL CLINIC</b>	<p>0</p>	<b>TOTAL NUMBER OF NURSES IN SCHOOL CLINIC</b>
<b>TOTAL NUMBER OF BEDS IN SCHOOL CLINIC</b>	<p>2</p>	<b>LEVEL OF INVOLVEMENT OF SCHOOL IN CBSE ACTIVITIES</b>
<b>DO THE TEACHERS GET PROPER GRADE LIKE PGT/TGT AS PER THE CLASSES THEY ARE ENTITLED TO TEACH?</b>	<p>YES</p>	<b>DO THE TEACHERS AND STAFF GET THEIR SALARY WITHIN FIRST WEEK OF THE MONTH?</b>
<b>DOES THE SCHOOL HAS EPF FACILITY FOR STAFF</b>	<p>NO</p>	<b>EPF REGISTRATION NUMBER</b>
<b>MODE OF SALARY</b>	<p>cash,</p>	<b>NAME OF BANK WITH</b>

PAYMENT		SALARY ACCOUNT
ARE THE SCHOOL ACCOUNTS AUDITED REGULARLY?	YES	PARENT TEACHERS ASSOCIATION AS PER NORMS
ACADEMIC SESSION	MARCH TO MARCH	VACATION PERIOD
AUDITED BALANCE SHEET OF SCHOOL	VIEW (PdfHandler.aspx?FileName=G:\cbse\2018\oasisdemo\balance\20854.pdf)	STAFF STATEMENT OF SCHOOL
INCOME AND EXPENDITURE STATEMENT	VIEW (PdfHandler.aspx?FileName=G:\cbse\2018\oasisdemo\income\20854.pdf)	ACADEMIC CALENDAR OF SCHOOL

**BEST PRACTICES OF SCHOOL**

our DRIs are provided best education in our area with fully coope

**FEE STRUCTURE OF SCHOOL**

20854--D R INTERNATIONAL SCHOOL VPO KAKODA HR  
 Dated : 28/07/2018

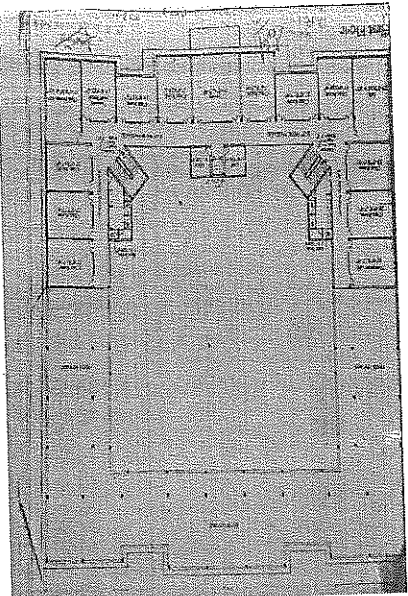
CLASS	ADMISSION FEE (in Rupees)	TUITION FEE (in Rupees)	YEARLY DEVELOPMENT CHARGES (in Rupees)	ANNUAL/MONTHLY OTHER CHARGES FOR OTHER FACILITIES (in Rupees)
PRIMARY	0	1400	0	
MIDDLE	0	1600	0	
SECONDARY	0	1800	0	
SENIOR SECONDARY	0	0	0	

**PHOTO OF SCHOOL**

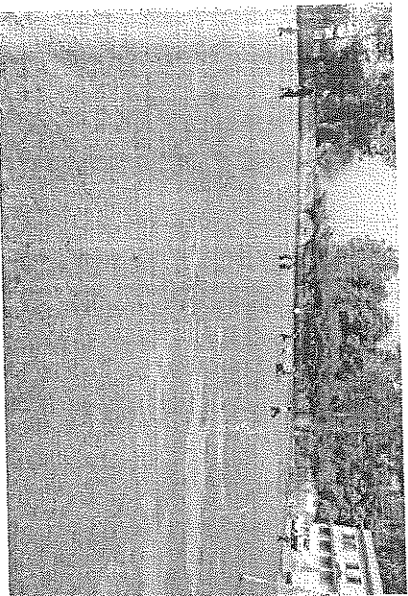
20854--D R INTERNATIONAL SCHOOL VPO KAKODA HR  
Dated : 28/07/2018

**SCHOOL PHOTOS**

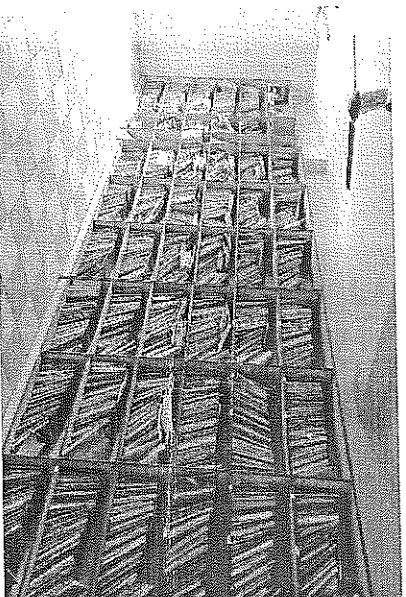
**GEO-TAGGED PHOTO**



**PLAYGROUND PHOTO**



**LIBRARY PHOTO**



**SCIENCE LAB PHOTO**